

# ASRI 2019 ANNUAL MEETING

JUNE 12-15, 2019

GRAND RAPIDS, MI

*The 39th Annual Meeting  
of the American Society for  
Reproductive Immunology*

**EXHIBIT • SPONSOR • ADVERTISE • SUPPORT**

**WWW.THEASRI.ORG**

# TABLE OF CONTENTS WHO WE ARE

About ASRI.....	2
Invitation to Attend.....	3
About Grand Rapids.....	4
Why You Should Exhibit.....	5
Exhibitor Information.....	6
Exhibit Booth Packages.....	7
Sponsorship Opportunities.....	8
Additional Sponsorship Items.....	9



[WWW.THEASRI.ORG](http://www.theasri.org)

The American Society for Reproductive Immunology (ASRI) was founded in 1981 with the mission to foster the development of reproductive immunology research, increase intellectual exchange between clinical and basic branches of reproductive immunology and provide mentoring for scientists-in-training. The ASRI is home to a diverse membership that includes clinical and basic scientists specializing in Obstetrics & Gynecology, Reproductive Biology, Microbiology, Mucosal Immunology, Genetics, Pediatrics, Infectious Diseases, Endocrinology, Pathology and Animal Sciences. Since its inception, the society has held an annual meeting to promote collaboration, cross-disciplinary research and mentorship within the field of Reproductive Immunology.

The American Journal of Reproductive Immunology (AJRI) is the official scientific journal of the ASRI and is ranked in the Top 10 in Reproductive Biology Journals, with a 5-year impact factor of 3.013. The AJRI publishes original research, reviews and opinion articles covering a range of topics within the field of Reproductive Immunology. The abstracts from the annual meeting are also published in AJRI.

For more information about the ASRI please visit us at [www.theasri.org](http://www.theasri.org)

## ASRI EXECUTIVE COUNCIL

### PRESIDENT

Gil Mor, MD, PhD

### VICE PRESIDENT

Da-Jin Li, MD, PhD

### TREASURER

Karen Racicot, PhD

### SECRETARY

Chandrakant Tayade, DVM, PhD

### COUNCILORS

Irina Burd, MD, PhD

Nazeeh Hanna, MD

Vikki Abrahams, PhD

David Aronoff, MD

Lawrence Chamley, PhD

Mei-Rong Du, PhD

Surendra Sharma, MD, PhD

## PROGRAM COMMITTEE



**Karen Racicot, PhD**

*Meeting Chair*



**Troy Ott, PhD**

*Meeting Co-Chair*



**Gil Mor, MD, PhD**

*ASRI President*

**Chandrakant Tayade, DVM, PhD**

**Mimi Ghosh, MD**

**Dorothy Sojka, PhD**

**Abey Eapen, PhD**

**David Sharkey, PhD**

## INVITATION TO ATTEND

Dear Exhibitors and Sponsors,

On behalf of the American Society for Reproductive Immunology, it is with great enthusiasm that I invite you to attend the 39th annual meeting, to be held at the historic Amway Grande Plaza Hotel in Grand Rapids, Michigan on June 12-15th, 2019. Our meeting brings together basic scientists, clinician-scientists and healthcare providers who work together to translate scientific discoveries into improved patient care.

This is an excellent opportunity for exhibitors and sponsors to advertise and/or interact with our diverse membership made up of professionals working in academia, industry, and clinical settings. This year's meeting will be an especially fitting for introducing and/or promoting new products and technologies, as the theme for ASRI 2019 is "Frontiers in Reproductive Immunology: Recent advances and novel concepts in Reproductive Immunology Research".

The Scientific Program committee has put together an exciting schedule of events, including plenary and break-out sessions led by leading national and international experts in the fields of Obstetrics & Gynecology, Immunology, Pediatrics, Infectious Diseases, Genetics, Neuroscience and Developmental Biology. We have multiple sponsorship opportunities for the annual meeting of ASRI 2019. Sponsors also receive complimentary registration, invitation to our Welcome Reception and Awards Banquet, and recognition on our website, in our program, and on our mobile app!

ASRI 2019 promises to provide multiple opportunities for learning, exchanging ideas and discovering up-and-coming technologies at a stunning venue.

I look forward to seeing you in Grand Rapids!

Karen Racicot, PhD  
ASRI 2019 Annual Meeting Chair



# ABOUT GRAND RAPIDS

Grand Rapids, Michigan, also known as “Beer City”, has been named one of America’s [Super Cool Cities](#) (Expedia, 2017), [1 of 52 Places to Go Worldwide](#) (New York Times, 2016), and [America’s #1 Travel Destination](#) (Lonely Planet, 2014).

It’s jam-packed with fun things to do and see after the meeting ends – including world-class [art](#), [beer](#), [dining](#), [nightlife](#), [historic sites](#), [tours and experiences](#), and the incomparable delights of Lake Michigan [beaches](#).



## Friendly & Helpful

Visitors can stop in the Welcome Center at Grand Rapids Art Museum for assistance and recommendations, or ask the many Certified Tourism Ambassadors™ who staff our hotels, shops and restaurants. (They’ll be wearing a CTA pin.)



## Easy to Get Around

Every city says it’s walkable. Grand Rapids really is – most everything downtown is walkable within a 10-minute stroll. Wide, well-maintained sidewalks, street crossings and pedestrian bridges make ambling a breeze. Prefer not to walk? Hop on a free DASH shuttle or Silverline bus. Taxis, trolleys and horse-drawn carriages are also readily available. Ride-sharing choices include Lyft, Runabouts, SteadyFare and Uber.

## Accessibility

Grand Rapids strives to accommodate visitors with special needs. We were ranked the #2 best city for people with disabilities in 2017 and we’re always working to make our services even more accessible for all travelers.



## Getting Here

The newly renovated Gerald R. Ford International Airport in Grand Rapids is the best in North America, according to an Airports Council International ranking for airports serving 2-5 million passengers annually. Air service includes 120+ nonstop flights a day to 20+ popular destinations. Downtown is just a 15-minute ride away.

Downtown Grand Rapids is situated at the intersection of two major expressways, and it’s within a day’s drive of half the U.S. population. Chicago is three hours away by car and Detroit is a two-and-a-half-hour trip. Grand Rapids is also accessible by Amtrak, with connections throughout Michigan and the Midwest.

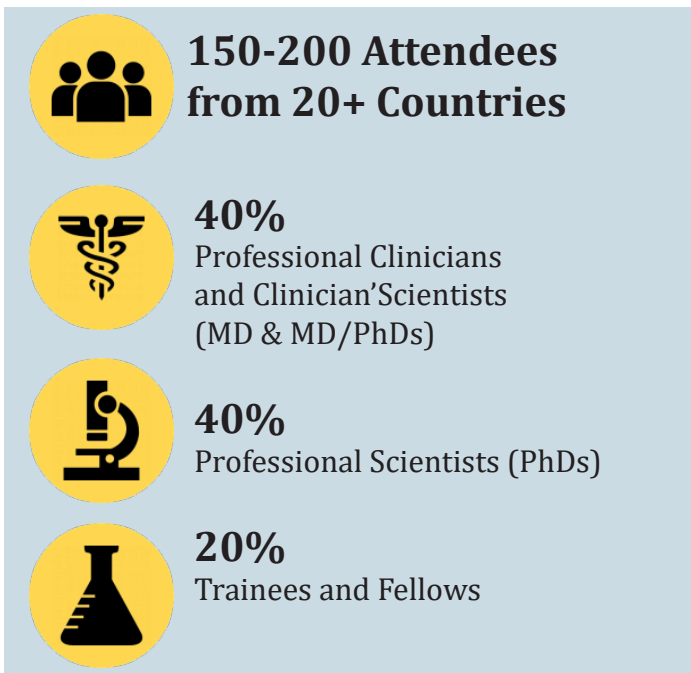


## Amway Grand Plaza Hotel

Discover historic charm and modern comforts at the Amway Grand Plaza, Curio Collection by Hilton. Nestled downtown by the Grand River for nearly a century, this historic hotel boasts original iron and woodwork, English Adams architecture, and a 29-story glass tower. Enjoy skywalk access to Van Andel Arena for concerts and Grand Rapids Griffins hockey. Guest rooms feature complimentary WiFi, a 42-inch HDTV and laptop-sized safe.

# WHY YOU SHOULD EXHIBIT **BRANDING OPPORTUNITIES**

## ATTENDEE SNAPSHOT



## TYPES OF PROFESSIONALS IN ATTENDANCE

Basic, translational, clinical scientists and scientists-in-training studying reproductive biology, immunology, infectious diseases, development, and related subjects. Clinicians, clinician-scientists, fellows, residents and epidemiologists who work in obstetrics & gynecology, infectious disease, neonatology, pediatrics, neuroscience, immune-related diseases and related fields.

## REASONS TO EXHIBIT

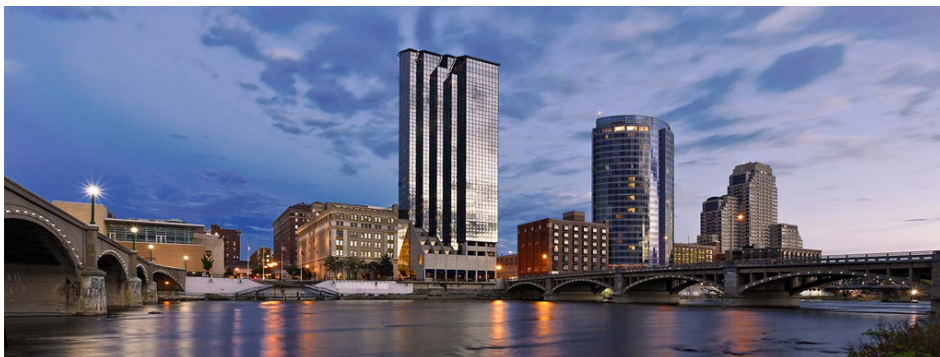
- Engage with serious medical professionals and scientists
- Meet current and future customers
- Generate new business opportunities with leaders in the field

- Become a Meeting Sponsor**  
Platinum, Gold, Silver or Bronze level
- Exhibit at a Booth**  
Standard or Premium spaces available
- Host a Lunch & Learn Workshop**  
Exclusive demo of your product with lunch
- Sponsor an Item**  
Name badges, attendee bags, etc.
- Sponsor Meeting WiFi**  
Recognition in the program, mobile app & signage
- Sponsor a Session**  
Scientific or Poster sessions available
- Provide Trainee Travel Grants**  
Supports Student, Fellow and Resident travel
- Sponsor an Award**  
Support research on a global level
- Sponsor a Breakfast or Coffee Break**  
Recognition in the program, mobile app & signage
- Advertise in Print**  
Your full color ad in the meeting program



# EXHIBITOR INFORMATION

## CONFERENCE LOCATION



### The Amway Grand Plaza Hotel

187 MONROE AVENUE NW

GRAND RAPIDS, MI

Phone: 616.774.2000

**EXHIBIT DATES:** Thurs. June 13 – Sat. June 15

**BOOTH SET UP** Wed. June 12 7:00 AM – 5:00 PM

**BOOTH REMOVAL** Sat. June 15 3:00 PM – 5:00 PM

### Exhibitor space:

- Center Concourse (5,225 sq ft)
- Adjacent to breakfast/coffee station
- Directly outside of meeting room and next to posters

### Additional networking opportunities:

- Exhibitors are invited to Welcome Reception on Wednesday
- Poster session with wine service on Friday
- Exhibitors invited to network 5-6:00PM Saturday

## SHOW HOURS

### WEDNESDAY

12:00 - 5:00 pm

Registration / Pre-Meetings

5:00 - 6:00 pm

Presidential Lecture

6:30 – 7:30 pm

**Welcome Reception**

### THURSDAY

7:00 am – 8:00 am

Breakfast / Exhibits

8:00 am - 11:30 am

AM Sessions & Coffee Break

11:30 am - 1:00 pm

*Break for Lunch / ASRI Business Meeting*

1:00 pm - 6:00 pm

PM Sessions & Coffee Break

### FRIDAY

7:00 am – 8:00 am

Breakfast / Exhibits

8:00 am - 11:30 am

AM Sessions & Coffee Break

11:30 am - 1:00 pm

*Break for Lunch / Mentor-Trainee Roundtable*

1:00 pm - 4:30 pm

PM Sessions & Coffee Break

4:30 pm – 5:30 pm

Wine & Cheese Poster Session & Exhibits

### SATURDAY

7:00 am – 8:00 am

Breakfast / Exhibits

8:00 am - 11:30 am

AM Sessions & Coffee Break

11:30 am - 1:00 pm

*Break for Lunch*

1:00 pm - 4:30 pm

PM Sessions & Coffee Break



# EXHIBIT BOOTH PACKAGES

**The scientific agenda has been structured with exhibitors in mind** - all Exhibit booths will be located in the Amway Grand hotel main meeting area with the scientific poster sessions, breakfast and breaks. Exhibits are open during poster sessions for maximum traffic.

## NON-PROFIT / UNIVERSITY BOOTH PACKAGE \$1,500

- Standard location
- (2) complimentary exhibitor delegates
- Booth Size: 8'x8'
- 1 Skirted table (3-sided)
- 2 Chairs
- Wastebasket
- Booth ID Sign
- Email & website marketing
- (2) tickets to Welcome Reception



## STANDARD BOOTH PACKAGE \$2,500

- Standard location
- (2) complimentary exhibitor delegates
- Booth Size: 8'x8'
- 1 Skirted table (3-sided)
- 2 Chairs
- Wastebasket
- Booth ID Sign
- Email & website marketing
- (2) tickets to Welcome Reception



## PREMIUM BOOTH PACKAGE \$3,500

- **Premium location near buffet stations**
- (2) complimentary exhibitor delegates
- Booth Size: 8'x8'
- 1 Skirted table (3-sided)
- 2 Chairs
- Wastebasket
- Booth ID Sign
- Email & website marketing
- (2) tickets to Welcome Reception



# SPONSORSHIP INFORMATION

The highly respected ASRI annual scientific program attracts reproductive immunologists and clinicians spanning the entire spectrum of subspecialty and practice types.

Attendees gain valuable knowledge and experience to help improve their research and practice, learn about the latest advances in reproductive immunology research, and earn Continuing Medical Education (CME) credits.

Sponsors at the following levels will be recognized in the official program, event signage and session slides throughout the conference:

## **Bronze Sponsor \$2,500**

- 1 complimentary registration
- 1 ticket to Welcome Reception
- 1 ticket to Awards Dinner
- 1 registration material handout
- 1/2 page full page color program ad
- Recognition on website
- Recognition in program
- Listing on mobile app

## **Gold Sponsor \$5,000**

- 2 complimentary registrations
- 2 tickets to Welcome Reception
- 2 tickets to Awards Dinner
- 1 registration material handout
- 1 full page color program ad
- Featured recognition on website and in printed program
- Listing on mobile app

## **Platinum Sponsor \$10,000**

- 4 complimentary registrations
- 4 Welcome Reception tickets
- 4 tickets to Awards Dinner
- 1 Session sponsorship
- 1 registration material handout
- 1 full page color program ad
- Featured recognition on website and in printed program
- Listing on mobile app

## **Silver Sponsor \$3,500**

- 1 complimentary registration
- 1 ticket to Welcome Reception
- 1 ticket to Awards Dinner
- 1 registration material handout
- 1/2 page color program ad
- Recognition on website
- Recognition in program
- Listing on mobile app



# ADDITIONAL SPONSORSHIP ITEMS

**All sponsorship items listed below  
Include recognition on website, official  
program, session slides & event signage  
with sponsor logo:**

## WELCOME RECEPTION - \$10,000

Join your colleagues at the first official event of the conference. Enjoy cocktails and hors d'oeuvres while you network.

## DINNER & AWARDS CEREMONY - \$10,000

Join us for this plated dinner as we honor our Trainee Student Competition finalists and present the final awards for the Posters & Gusdon Competition. Includes 4 dinner tickets for sponsor.

## ATTENDEE BAGS - \$5,000

Includes conference bags with sponsor logo, one marketing piece inserted into bag, 2 complimentary delegate registrations and sponsor recognition on website, official program and session slides. Up to 300 bags.

## TRAVEL GRANTS - \$5,000

Provide (5) \$1,000 travel awards for trainees to attend the meeting

## NAME BADGE LANYARDS - \$3,500

Includes sponsor name/logo on all name badge pouches, 2 complimentary registrations, recognition on website, official program and session slides and all badge printing & production costs.

## "LUNCH & LEARN" WORKSHOPS - \$5,000

Hosted premium luncheon in individual meeting room for you to showcase your products and services to an interested group of attendees in a more intimate setting. Includes lunch, standard A/V and meeting room.

## CONTINENTAL BREAKFAST - \$2,000 each

Sponsor breakfast for all attendees. Includes your logo on signage by buffet stations.

## COFFEE BREAK - \$1,000

Sponsor a morning or afternoon break. Includes your logo on signage by buffet stations.

## SESSION SPONSOR - \$2,500 each

Sponsor a poster or scientific session. Includes your logo projected onscreen in meeting room and verbal acknowledgement.

## BAG INSERTS - \$1,000 (per item)

Sponsor to provide item for up to 200 attendees to be given out at Registration. Includes your logo prominently featured.

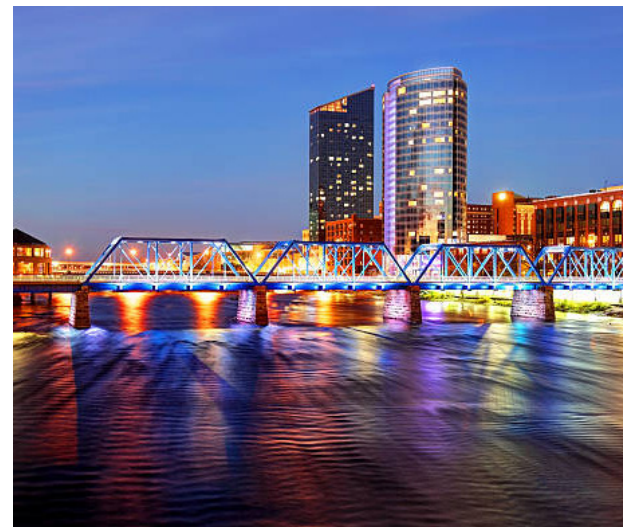
## PROGRAM ADVERTISEMENTS

### Exhibitors or Sponsors

\$1000 full page      \$500 half page

### Non-Exhibitors or Sponsors

\$1500 full page      \$750 half page



*If you would like to reserve a booth or sponsorship, or would like to create a custom package, please contact:*

**Karen Racicot, PhD**

*ASRI Meeting Chair*

Michigan State University

Phone: (616) 234-0986

Email: [karen.racicot@hc.msu.edu](mailto:karen.racicot@hc.msu.edu)